





La vida en los bosques

...Walden is a perfect forest mirror, set round with stones as precious to my eye as if fewer or rarer. Nothing so fair, so pure, and at the same time so large, as a lake, perchance, lies on the surface of the earth. Sky water. It needs no fence. Nations come and go without defiling it. It is a mirror which no stone can crack, whose quicksilver will never wear off, whose gilding Nature continually repairs; no storms, no dust, can dim its surface ever fresh;—a mirror in which all impurity presented to it sinks, swept and dusted by the sun's hazy brush,—this the light dustcloth,—which retains no breath that is breathed on it, but sends its own to float as clouds high above its surface, and be reflected in its bosom still.

A field of water betrays the spirit that is in the air. It is continually receiving new life and motion from above. It is intermediate in its nature between land and sky. On land only the grass and trees wave, but the water itself is rippled by the wind. I see where the breeze dashes across it by the streaks or flakes of light. It is remarkable that we can look down on its surface. We shall, perhaps, look down thus on the surface of air at length, and mark where a still subtler spirit sweeps over it.

Thoreau, Henry David (1854)
Walden, or Life in the Woods























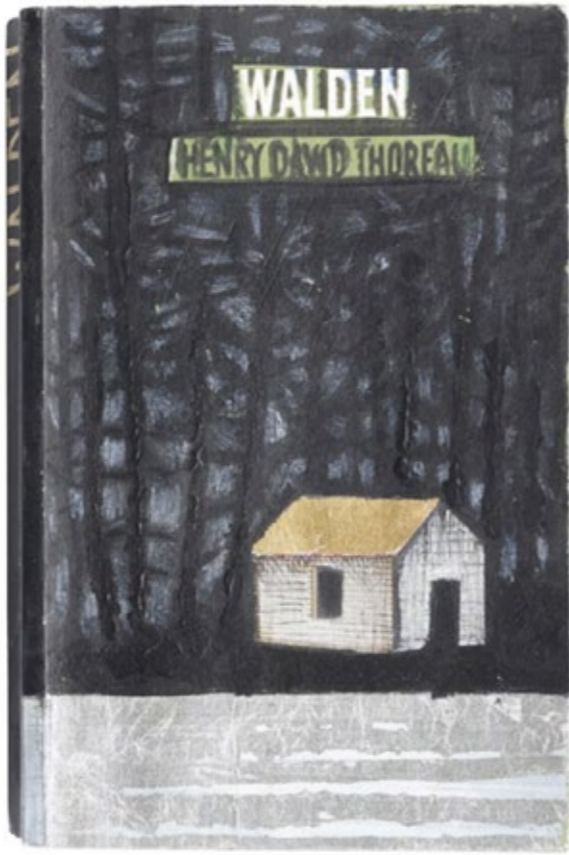
Cohen & Mazzucchelli
Nessy Cohen (Buenos Aires, 1961)
Claudia Mazzucchelli (Buenos Aires, 1964)

Claudia Mazzucchelli and Nessy Cohen met in 1985 at the Ernesto de la Cárcova School of Fine Arts, where they studied under Luis Benedit and Roberto Aizenberg.

They developed their artistic careers separately, exhibiting their works from 1988 to today. Nessy simultaneously undertook design projects for legendary Argentine rock bands and theatre productions (album covers, costumes, stage designs, and art direction).

They married in 1996 and established residence in Spain in 1998, where they carried out numerous mural painting projects—this period perhaps laid the groundwork for their collaborative work. In 2014, they created a series of paintings together, marking the beginning of an extensive collaborative production. They conceived four projects: *La Bóveda Celeste* (2015), based on texts by Alejandro Urdapilleta; *Salvaje Flores* (2016), inspired by *The Observer's Book*; *Unión* (2017) and *Salón Paraíso* (2018), based on stories by Virgilio Piñera.

The work of Cohen & Mazzucchelli is part of art collections in Argentina, Europe, and the United States. They live and work in Palma de Mallorca, Spain.



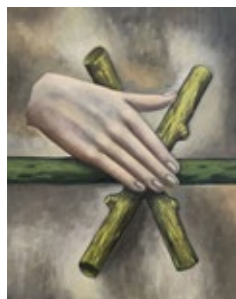


fig 01

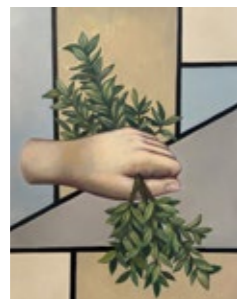


fig 01

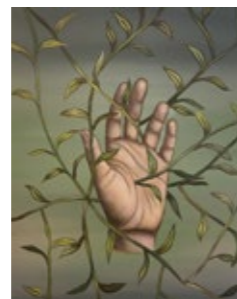


fig 03



fig 04



fig 05



fig 06



fig 07

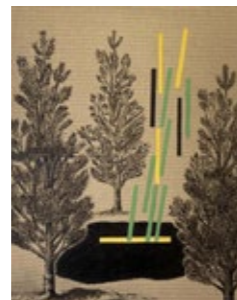


fig 08



fig 09



fig 10



fig 11



fig 12



fig 13



fig 14



fig 15



fig 16



fig 17



fig 18



fig 19



fig 20



fig 21



fig 22



fig 23



fig 24



fig 25



fig 26

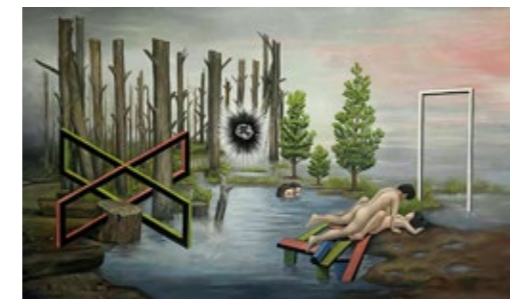


fig 27

COHEN & MAZZUCHELLI
La vida en los bosques
Works

fig 01
COHEN & MAZZUCHELLI
Mano palo
2019
Oil on canvas
16.2 x 13 in

fig 02
COHEN & MAZZUCHELLI
Mano rama
2019
Oil on canvas
16.2 x 13 in

fig 03
COHEN & MAZZUCHELLI
La naturaleza no pregunta ni responde sobre nada
2023
Oil on canvas
16.2 x 13 in

fig 04
COHEN & MAZZUCHELLI
La escala del ser 1
2023
Oil on canvas
9.4 x 7 in

fig 05
COHEN & MAZZUCHELLI
La escala del ser 2
2023
Oil on canvas
9.4 x 7 in

fig 06
COHEN & MAZZUCHELLI
Gorrión en leña
2023
Oil on canvas
16.2 x 13 in

fig 07
COHEN & MAZZUCHELLI
Campo de visión
2023
Oil on canvas
16.1 x 13 in

fig 08
COHEN & MAZZUCHELLI
Lee tu destino
2023
Oil on canvas
15.7 x 11.8 in

fig 09
COHEN & MAZZUCHELLI
Virtud y exceso
2023
Oil on canvas
15.7 x 11.8 in

fig 10
COHEN & MAZZUCHELLI
Invierno
2023
Oil on canvas
15.7 x 11.8 in

fig 11
COHEN & MAZZUCHELLI
El dios de la papa
2023
Oil on canvas
9.4 x 7 in

fig 12
COHEN & MAZZUCHELLI
Pájaro Negro
2023
Charcoal and enamel on linen
48.8 x 39.5 in

fig 13
COHEN & MAZZUCHELLI
Espejo perfecto para bosque
2023
Oil on canvas
15.7 x 11.8 in

fig 14
COHEN & MAZZUCHELLI
Rabbit
2022
Charcoal and enamel on linen
36 x 26 in

fig 15
COHEN & MAZZUCHELLI
Working on a revolution
2022
Charcoal and enamel on linen
36 x 26 in

fig 16
COHEN & MAZZUCHELLI
Horse Latitudes
2022
Charcoal and enamel on linen
36 x 26 in

fig 17
COHEN & MAZZUCHELLI
Japón
2022
Charcoal and enamel on linen
36 x 26 in

fig 18
COHEN & MAZZUCHELLI
Ningún método
2023
Charcoal and enamel on linen
36 x 26 in

fig 19
COHEN & MAZZUCHELLI
Casa
2019
Ink and charcoal on canvas
77.5 x 51.9 x 1.9 in

fig 20
COHEN & MAZZUCHELLI
La crecida
2019
Mixed technique
69.6 x 51.9 x 1.9 in

fig 21
COHEN & MAZZUCHELLI
Martillo
2023
Charcoal and enamel on linen
36 x 26 in

fig 22
COHEN & MAZZUCHELLI
A forest
2019
Ink and charcoal on canvas
45.2 x 35 in

fig 23
COHEN & MAZZUCHELLI
Escalera
2023
Charcoal and enamel on linen
48.8 x 39.5 in

fig 24
COHEN & MAZZUCHELLI
Deriva
2023
Oil on canvas
13 x 16.1 in

fig 25
COHEN & MAZZUCHELLI
La laguna en invierno
2023
Charcoal and enamel on linen
73.2 x 112.2 x 1.9 in

fig 26
COHEN & MAZZUCHELLI
Life in the woods
2023
Charcoal and enamel on linen
74 x 107.4 x 1.9 in

fig 27
COHEN & MAZZUCHELLI
La Laguna Estigia
2020 2022
Oil on canvas
42.5 x 79.1 x 0.9 in

walden naturae

wn walden naturae is an exhibition space set in the enclave of Pueblo Garzón (Maldonado, Uruguay).

Close to the sea, it is surrounded by hills, olive groves and vineyards in a more secluded Uruguay.

Its annual programming combines historical and contemporary exhibitions in all disciplines and media, in its own 5000 square meter space.

wn walden naturae activates and cultivates its unique setting with agricultural, ecological and artistic initiatives, creating an idyllic context.



Program 13
Pablo Uribe
La vida en los bosques
Jan 2024
—

Museography
Gastón Arismendi

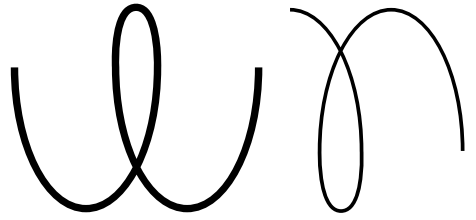
Identity Design
Catalogue
Oficina Laura Escobar

Photography
José Luis Morales

Contact
Walden Naturae
Los Cerrillos c/El Faro
[CP 20400] Pueblo Garzón
Maldonado, Uruguay
+ 5982 9122 1977
info@waldennaturae.com
@waldennaturae

waldennaturae.com
w-w-w.ar

I went to the woods because I wished to live deliberately, to front only the essential facts of life, and see if I could not learn what it had to teach, and not, when I came to die, discover that I had not lived. I did not wish to live what was not life, living is so dear; nor did I wish to practice resignation, unless it was quite necessary. I wanted to live deep and suck out all the marrow of life ... HENRY DAVID THOREAU "Walden; or, Life in the Woods"

A handwritten signature in black ink, consisting of a series of loops and curves, likely representing the name Henry David Thoreau.