









*Nave hornero*  
Antonio Echeverría

I woke up today searching for a word. Some note that might be enough to take me back to that summer. I went through some boxes in storage, and there I came across a notebook from that time. More than anything, I remember how hot those months were. It was a fathomless heat, one I had never felt before. I remember the tallies of people infected on TV, the drip of the air conditioner and walks around the city. *Buenos Aires* seemed different than how I had seen it all my life. It was exhausted, with an imminent sense that something was about to lay waste to it all. It was *that* summer when, in the storerooms of a museum, I first encountered works by Max Gómez Canle.

This notebook, dedicated to entries on artists to investigate, opens in the following manner: with the story of a conversation with a taxi driver. I write; *as we begin to take 9 de julio Avenue, I see the first incinerated car, off to one side of the street. We keep on going, and there at the end of the Avenue, I see another one, on the opposite side. I ask the taxi driver why there are so many burned cars. He answers with the obvious. He doesn't know, but says that maybe it has something to do with the heat.* The rest of the page is blank. The pages that follow are dedicated to MGC's paintings. I ask myself if the subject who observes his landscapes—which is not the same one who observes his paintings—is able to escape from the sun, from the shadows, in the case of being invaded, or if, in fact, he or she will know what empty spaces look like. His landscapes are loaded with tracks, continual premises of some presence lost. The residue of an overall despair. Of a horizon for pessimists.

It wasn't until weeks later that I returned to 9 de julio Avenue. I walked to the spot where I had first seen that burned car, and there I found its mark. The remains of the car were no longer there, but there was a dark stain on the ground. It was intense, with blurred edges, the memory of an absence. I asked myself: *Can it be that ruins are able to begin something?* In that city, it seemed like something was taking place. As if one era were coming to an end, and a new one about to begin, still in no hurry to do so.

MGC insists on landscape in such a way that what appears in those valleys, lagoons, cliffs and woods is the greatest desire to rid himself of romanticism, whose load he bears. Because no landscape comes without a horizon, no horizon without perspective, and no perspective without reality. What underlies those traces of his landscape, and ours, is no more than a mirage of an ideology.

First of all, the *nave hornero* (ovenbird vessel) is a face. It is a landscape that no longer desires to be landscape, one that longs to become a body. We know its plains, its twilights and its climate. Whoever observes the paintings is just as much landscape as landscape is subject. The reason why we incessantly seek out their horizons is the same reason that we never come to know them completely; we do not know how much power we lose facing them.

A valley fringed by mounds that rise up, a face converted into a folded-up promise, a frame that is multiplied, an infinite shadow and a mark left by extinguished flames on the asphalt. Max Gómez Canle's gestures bring us right back to the beginning. What will the landscape we have yet to know look like?

*Introduction to Nave hornero (Ovenbird Vessel)*  
Max Gómez Canle

*Nave Hornero (Ovenbird Vessel)* is my first solo show at W. A show conceived especially for W—naturae and its surroundings in Pueblo Garzón, Uruguay, it consists primarily of oil paintings on different supports, representing landscapes contemplated from a bird's eye view, specifically, in this case, that of an ovenbird. I imagine an ovenbird whose nest is situated somewhere between Argentina, Uruguay, Paraguay and Brazil, taking imaginary flight throughout these territories, lacing together different landscapes by way of a common thread, tierra colorada (red earth, that is, earth that is simultaneously a color—iron oxide, which is one of the first pigments humanity utilized—and a place, which in this case is one of the show's underlying themes). I am thinking of the Paraná river basin, the zone encompassing the Guaraní aquifer, as an area of influence, and a context for my most recent investigations. This bird's imagined visions are portrayed in these landscapes, and much like automatism serving as a creative generator for the whole surrealist movement, I utilize perspective as a creative tool in them, putting myself in the bird's point of view. These panoramas are, in turn, mainly bird's eye view perspectives, but they are also descriptions, conceived on the basis of what a bird might see or might find. I invent this bird vision. And the makeup of these visions involves, above all, a dialog between flora, fauna and particular rational, geometric elements which typically appear in my work and can be traced back in a cross-lineage between utopian rationalist movements from the '50s, such as Madi or Perceptivism, pre-Columbian indigenous peoples' geometric designs and the straight lines of first-generation video games. From these dialogs and the pictorial tradition's capacity for cohesion, my aim is to shape a landscape. What elements constitute a landscape, our landscape?

The exhibition is also designed especially for this space, primarily in terms of the passing of time and changes in light at different times of day. It is conceived to show these paintings in their condition as objects, conceived as paintings shown as if they were sculptures. The works float, and also fly like birds, receiving light from different angles, continually changing and interacting. For this very reason, gold is included in many cases, its gleam accentuating the interaction. There are big, large format paintings, done on raffia, which is a rough, rustic fabric, and smaller, more delicate paintings on precious hardwood panels, and others on stone, granite or cobblestones. In this presentation, the paintings all look in different directions; I don't use

any of the walls in the space. They interact all the time with light and with all the different perspectives that one can establish. The viewer is obliged to take a course that somewhat emulates what might be that of a bird in flight.

To conclude, then, or actually, to begin, because this is an introduction to the show, there is one work, outside the exhibition space, that is a sculpture, thought of as a link with the surrounding environment. It is a birdbath, which is also a granite monolith containing the keys of how the show has been put together, or my way of thinking about painting and how I use it as a tool to come to know the place that I inhabit. This monolithic sculpture is actually made of two kinds of stone, a top done in red granite, which is the most typical granite in the southern part of the Americas, and side pieces made of Italian Rosso Laguna marble. So, then, there is a sort of syncretism between two materials with very distant origins, analogous to the syncretism I work with in my paintings, where painting in the European tradition at the same time portrays the space of the Americas. This object also has a utilitarian function, which is to provide water for birds to drink. I say that the birdbath functions as a link with the surroundings because just as the show is conceived from a fictional bird's point of view, it is also conceived to be transited by birds, to be used. In this case, the piece is both an offering for and an interaction with birds, while its function is to connect the show with the environment, working with an idea about where works begin and end, where fiction and narrative begin and end, and whether all of these might well be possible perspectives for us to learn how to relate to whatever surroundings we are in, and to be part of them, establishing new relationships.

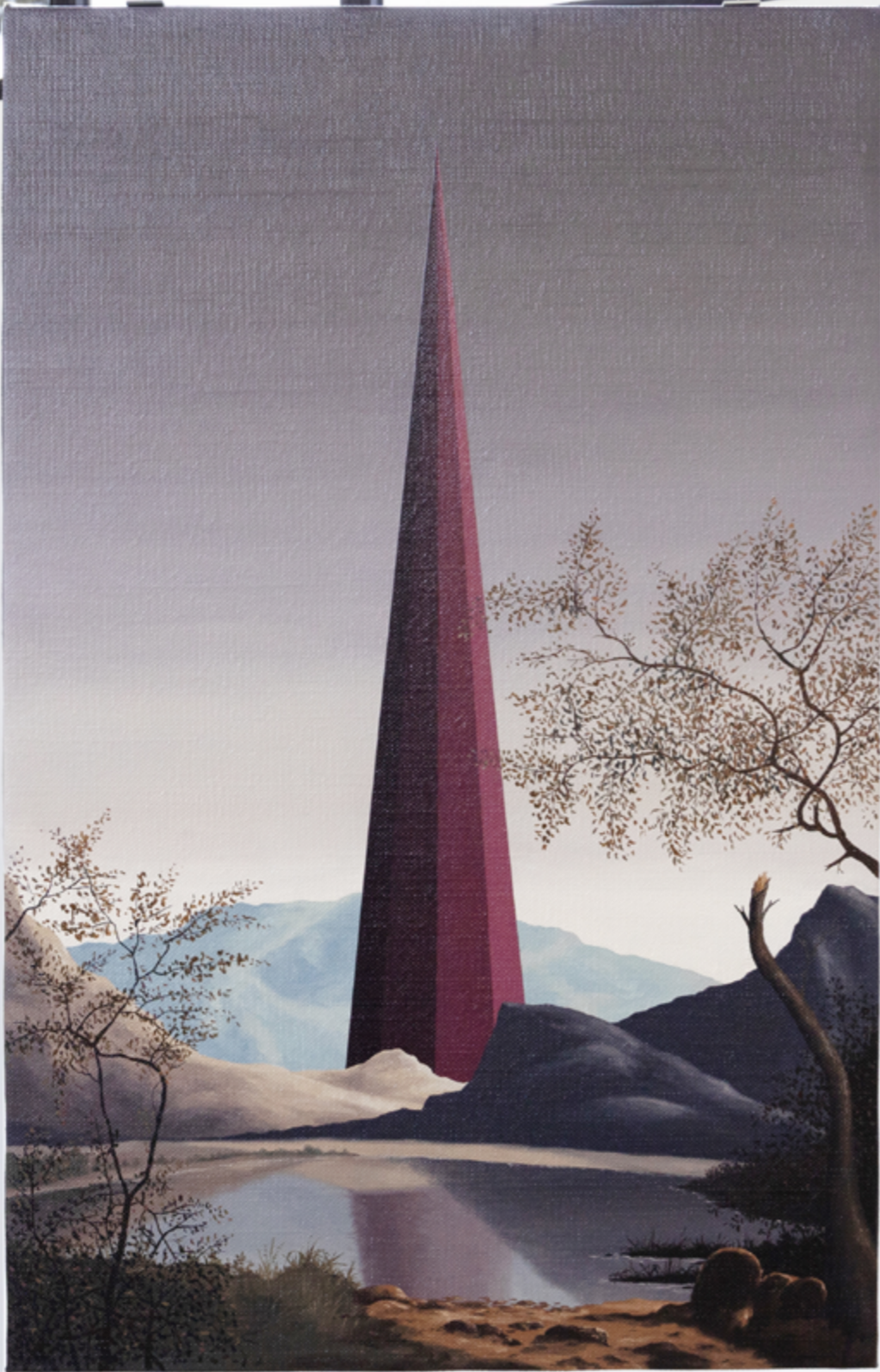














































Max Gómez Canle  
(Argentina, 1972)

Max Gómez Canle specialized in painting at the Escuela Nacional de Bellas Artes Prilidiano Pueyrredón.

Among other awards, he has received the Premio Konex Artes Visuales (2022), the Premio Klemm (2014), the 50th Anniversary Award of the Fondo Nacional de las Artes (2008), the Premio "Ignacio Pirovano" (2007), and recognition at the Salón Nacional de Rosario (2007).

Recent solo exhibitions include *Nave hornero, W-naturae*, Pueblo Garzón, Uruguay (2024); *La tregua del agua*, Museo Macro, Rosario, Museo de Bellas Artes Lola Mora, Salta, Argentina (2024), and Museo del Barro, Asunción, Paraguay (2023); *Fuera de lugar*, Galería Casa Triángulo, São Paulo, Brazil (2022); *Vivir así: sin palabras*, Galería Ruth Benzacar, Buenos Aires, Argentina (2020); *El salón de los caprichos*, Museo de Arte Moderno de Buenos Aires, Argentina (2019).

Recent group exhibitions include *Enzo Cucchi-Max Gómez Canle*, The National Exemplar Gallery, Salsomaggiore Terme, Italy (2023); *Historia de la imaginación en la Argentina*, Museo de Arte Moderno de Buenos Aires, Argentina (2019); *Focus Latin America*, Art Toronto, Canada (2015); *My Buenos Aires*, Maison Rouge, Paris, France (2015); *Beyond Magic*, Galerie Xippas, Paris, France (2014); *Casa Triángulo no Pivô*, Pivô, São Paulo, Brazil (2014).

His work is part of the collections of the Museo de Arte Moderno de Buenos Aires, the Museo Nacional de Bellas Artes Neuquén, the Museo Castagnino+macro in Rosario, and the Fundación Federico Jorge Klemm in Buenos Aires.  
Lives and works in Buenos Aires.

Antonio Echeverría  
(Chile, 1999)

Curator and researcher of contemporary art. He holds a Bachelor's Degree in Art from the Pontificia Universidad Católica de Chile and later continued his studies at the Institute of Aesthetics of the Faculty of Philosophy at the same University.

During his academic career, he completed internships at institutions such as Ch.Aco, the Fava Foundation, and the Museum of Modern Art in Buenos Aires, where he worked as a research intern in the collection area.

He participated as a curatorial assistant for the exhibition *De Bastardismos y Apariciones*, curated by Paula Solimano at Galería Macchina, and in 2022, he coordinated the two-part exhibition entitled *Y de pronto ya no había más orilla*, curated by Miguel A. López and Gala Berger at Il Posto. He is currently part of the Asamblea Permanente: Taller de Prácticas Curatoriales at the Universidad Torcuato Di Tella in Buenos Aires.

Since 2022, he has held the position of Director of Il Posto's Research and Documentation Center. This private, non-profit art space is dedicated to the study, preservation, and exhibition of contemporary Latin American art in Santiago, Chile, through its collection.

He lives and works in Santiago de Chile.



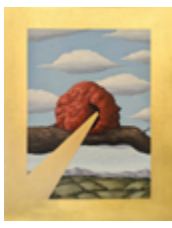


fig 01



fig 02



fig 03



fig 04



fig 05



fig 06



fig 07



fig 08



fig 09

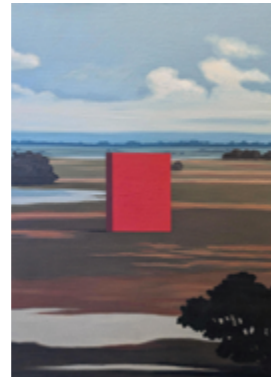


fig 10



fig 11



fig 12



fig 13



fig 14



fig 15



fig 16



fig 17

MAX GÓMEZ CANLE  
*Nave hornero*

fig 01  
MAX GÓMEZ CANLE  
*Nave hornero*  
2024  
Oil on canvas  
14.9 x 11.8 in

fig 02  
MAX GÓMEZ CANLE  
*Ombú y charco*  
2024  
Oil on canvas  
7.9 x 15.7 x 1.8 in

fig 03  
MAX GÓMEZ CANLE  
*Flama y cigüeña*  
2024  
Oil on canvas  
6.1 x 6.1 x 1.9 in

fig 04  
MAX GÓMEZ CANLE  
*Atardecer*  
2024  
Oil on canvas  
5.7 x 26.6 x 1.4 in

fig 05  
MAX GÓMEZ CANLE  
*Sin título*  
*Untitled*  
2024  
Oil, wax and gold  
on granite  
7.9 x 5.9 x 9.8 in

fig 06  
MAX GÓMEZ CANLE  
*Ojos de oro*  
2024  
Oil, wax and gold  
on granite  
5.5 x 8.6 x 6.7 in

fig 07  
MAX GÓMEZ CANLE  
*Punta dorada*  
2024  
Oil, wax and gold  
on granite  
5.9 x 9.4 x 5.9 in

fig 08  
MAX GÓMEZ CANLE  
*Viaje*  
2024  
Oil on canvas  
45.3 x 31.5 in

fig 09  
MAX GÓMEZ CANLE  
*Viaje*  
2024  
Oil on canvas  
45.3 x 31.5 in

fig 10  
MAX GÓMEZ CANLE  
*Viaje*  
2024  
Oil on canvas  
45.3 x 31.5 in

fig 11  
MAX GÓMEZ CANLE  
*Viaje*  
2024  
Oil on canvas  
45.3 x 31.5 in

fig 12  
MAX GÓMEZ CANLE  
*Punta colorada*  
2024  
Oil on canvas  
43.3 x 27.6 in

fig 13  
MAX GÓMEZ CANLE  
*Ventana*  
2024  
Oil on canvas  
49.2 x 49.2 in

fig 14  
MAX GÓMEZ CANLE  
*Ventana*  
2024  
Oil on canvas  
49.2 x 49.2 in

fig 15  
MAX GÓMEZ CANLE  
*Distancia*  
2024  
Oil on canvas  
78.7 x 47.2 in

fig 16  
MAX GÓMEZ CANLE  
*Distancia*  
2024  
Oil on canvas  
78.7 x 47.2 in

fig 17  
MAX GÓMEZ CANLE  
*Distancia*  
2024  
[Oil on canvas]  
78.7 x 47.2 in



# walden naturae

Walden Naturae is an exhibition space set in the enclave of Pueblo Garzón (Maldonado, Uruguay).

Close to the sea, it is surrounded by hills, olive groves and vineyards in a more secluded Uruguay.

Its annual programming combines historical and contemporary exhibitions in all disciplines and media, in its own 5000 square meter space.

Walden Naturae activates and cultivates its unique setting with agricultural, ecological and artistic initiatives, creating an idyllic context.



*Program 16*  
Max Gómez Canle  
*Nave hornero*  
Dec 2024  
—

*Museography*  
Gastón Arismendi

*Identity Design*  
*Catalogue*  
Oficina Laura Escobar

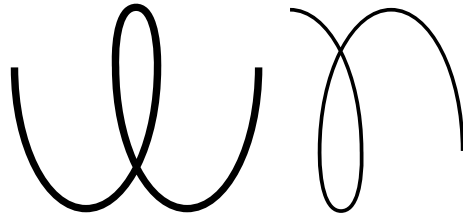
*Photography*  
José Luis Morales

*Contact*  
Walden Naturae  
Los Cerrillos c/El Faro  
[CP 20400] Pueblo Garzón  
Maldonado, Uruguay  
+ 5982 9122 1977  
info@waldennaturae.com  
@waldennaturae

waldennaturae.com  
w-w-w.ar



*I went to the woods because I wished to live deliberately, to front only the essential facts of life, and see if I could not learn what it had to teach, and not, when I came to die, discover that I had not lived. I did not wish to live what was not life, living is so dear; nor did I wish to practice resignation, unless it was quite necessary. I wanted to live deep and suck out all the marrow of life ... HENRY DAVID THOREAU "Walden; or, Life in the Woods"*

A handwritten signature in black ink, consisting of a series of loops and curves, resembling a stylized 'e' or 'w' followed by a flourish.